

Limited One-Year Warranty

Your RadiantLife LT is warranted to be free of defect in material and workmanship under normal use.

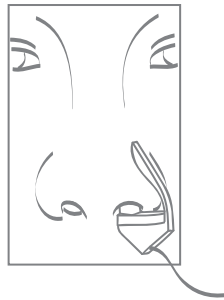
This warranty is limited for a period of one year from its original purchase date in which repairs or exchange of parts according to what is deemed necessary by the company will be made free of charge.

This warranty does not cover damage by the following:

- Misuse, abuse or alteration to the product
- Damage caused by accident or neglect
- Servicing or repairs made by unauthorized persons

WE SHALL NOT BE RESPONSIBLE FOR ANY INCIDENTAL, SPECIAL, OR CONSEQUENTIAL DAMAGES RESULTING FROM THE USE OF THIS PRODUCT.

RadiantLife* LT



USER'S GUIDE

Technical Specification

Light Source: Laser diode 655nm
 Power: 3 - 5 mW regulated
 Auto Off Timer: 25 minutes
 Indicators: Power ON
 End of session
 Battery low
 Battery Type: 1 x 1.5V AA
 Battery Life: approx. 60 hours with alkaline battery

This product conforms to the provisions of the EC directive EN 60601-1:1990+A1+A2 (Medical Device Directive)



LASER RADIATION
 AVOID DIRECT EYE EXPOSURE
 IEC 60825-1
 CLASS 3R LASER PRODUCT



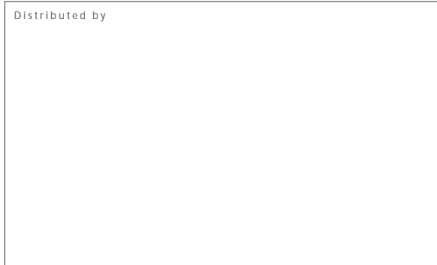
Technology by Greatcore, Inc., USA

Radiantcore Sdn. Bhd.
 H-2-1 Plaza Damas 60 Jalan Sri Hartamas 1
 50480 Kuala Lumpur Malaysia

Disposal

To protect the environment, dispose of used batteries at appropriate collection sites according to national or local regulations.

Plastic parts are resistant to biodegradation and should be recycled according to material as identified on the parts.



RLIFEman(M)090211

OPERATING INSTRUCTIONS

Treatment Sessions

Each treatment session lasts 25 minutes. One session per day is recommended.

Using RadiantLife LT

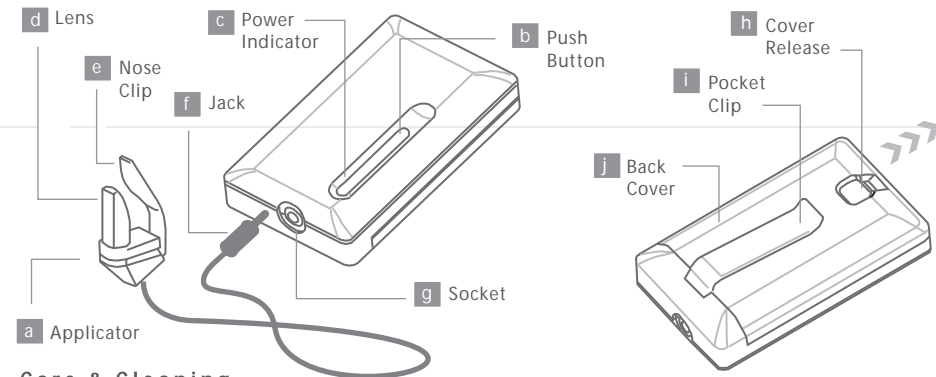
- Press the cover release (h) to open the back cover (j) and insert a 1.5V AA battery. Slide the cover back in until it snaps in place.
- Insert jack (f) into the socket (g).
- Insert the applicator lens (d) deep inside nose, with the clip (e) on the outside.
- Press the button (b) to switch on the unit. A single beep will sound.
- The unit will remain switched on for 25 minutes. An indicator light (c) will blink throughout the session.
- At the end of the session, the unit will beep three times and then switches off. The unit may be switched off at mid-session by pressing button (b).

Safety Precautions

- Avoid shining the laser light directly into eye.
- Switch on the unit only after the applicator is properly worn.

Replacing the Battery

- Insert new batteries when the Control unit beeps 5 times continuously.
 Note: Remove battery if equipment is not likely to be used for some time.
- To access the battery compartment, press the cover release to open the battery door. When inserting new batteries, make sure that the poles are in the right direction. Slide the battery door back in until it snaps in place.



Care & Cleaning

- To clean the Applicator, gently wipe surface with a cotton swab or a soft cloth moistened with alcohol.
- Use a soft, dry cloth to clean other surfaces. Do not use abrasive cleaners. Do not submerge the Applicator or Control unit in water.
- Store the equipment in a dry location, free from dust, away from direct sunlight. The storage temperature should be within 10°C to 40°C.
- Clips (e) and (j) are made of a tough, high-impact plastic material. However excessive bending can cause permanent deformation.

Product Classification

- Internally powered equipment
- Type B applied part - nose applicator
- Ordinary equipment: IPX0
- Equipment not suitable for use in the presence of a flammable anesthetic mixture with air or with oxygen or nitrous oxide
- Short-time operation: 25 minutes
- No significant electromagnetic or other interference between RadiantLife LT and other equipment

Contraindications (Reasons not to use)

- Current or history of cancer
- During pregnancy
- A pacemaker or internal defibrillator
- Epileptic